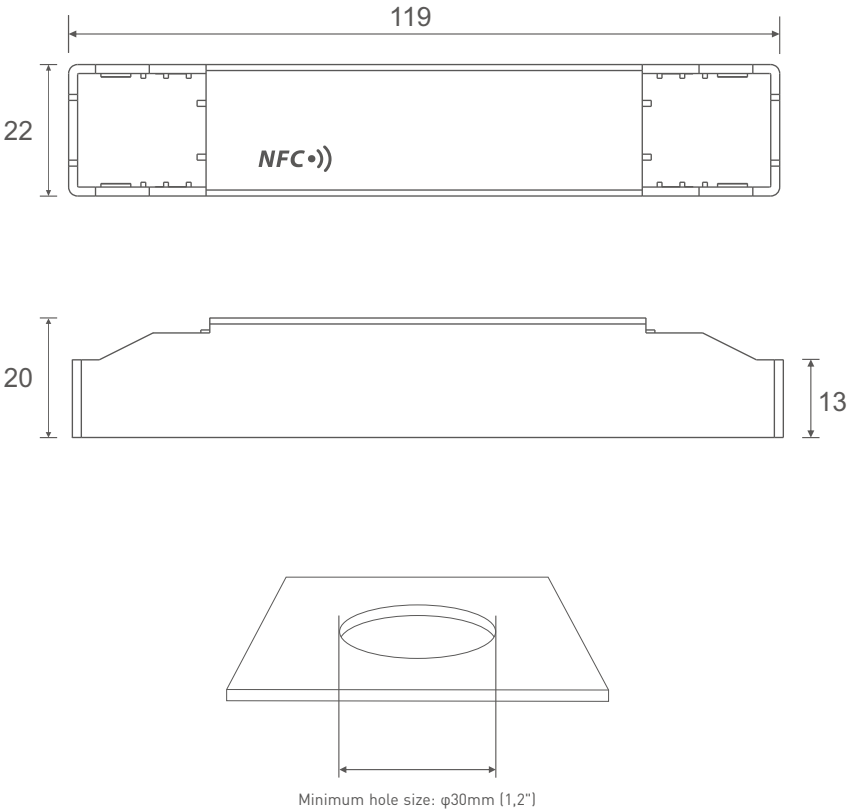
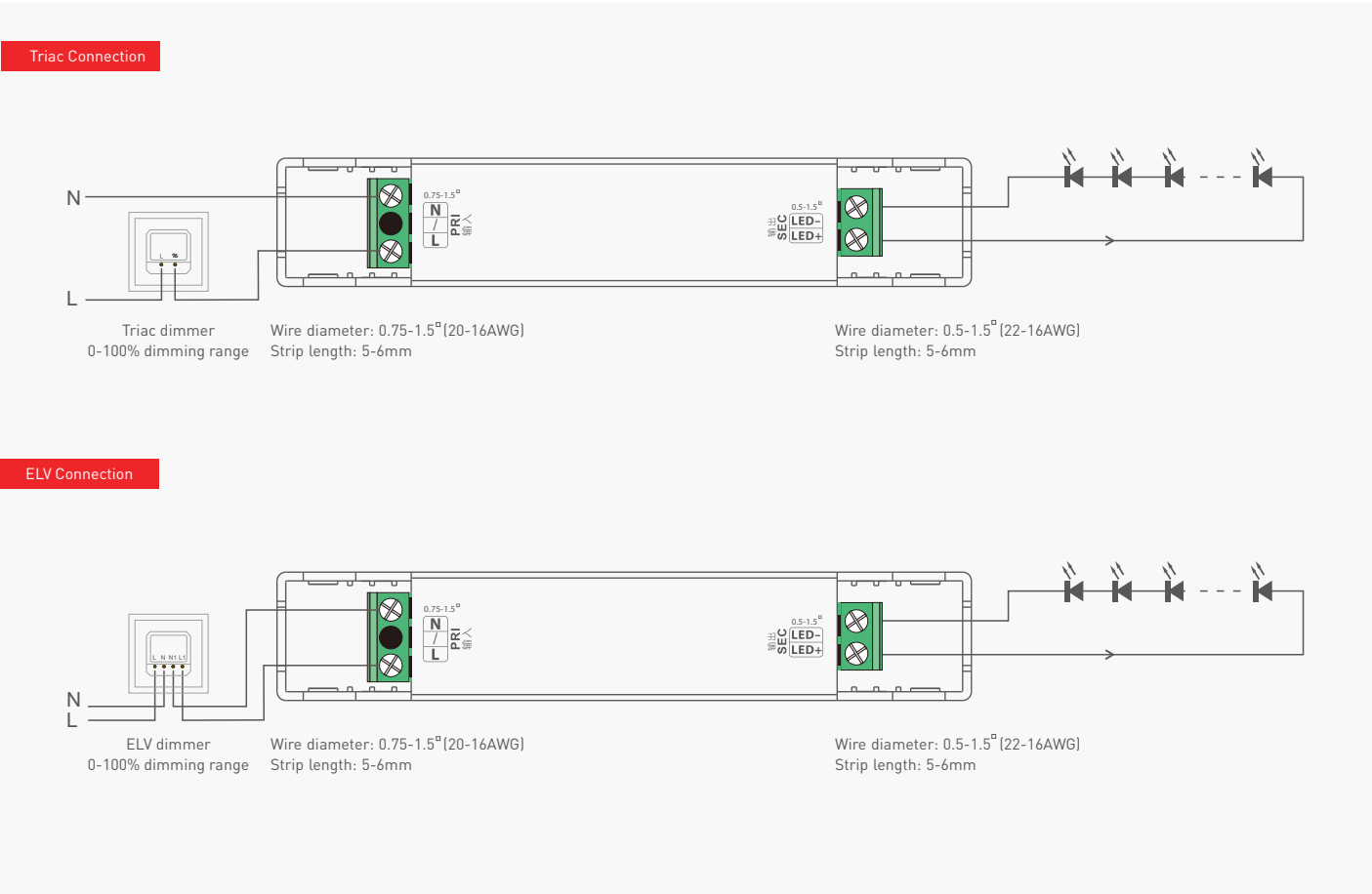


Product Size

Unit: mm



Wiring Diagram

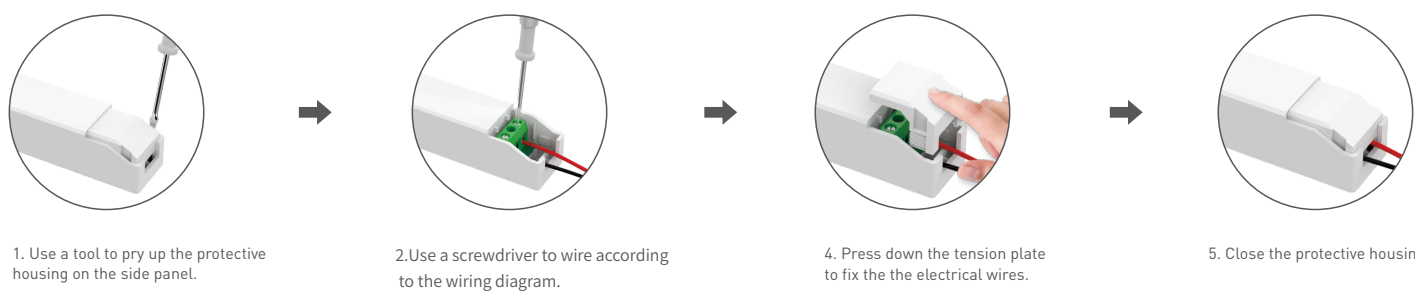


Current and Parameters Sheet

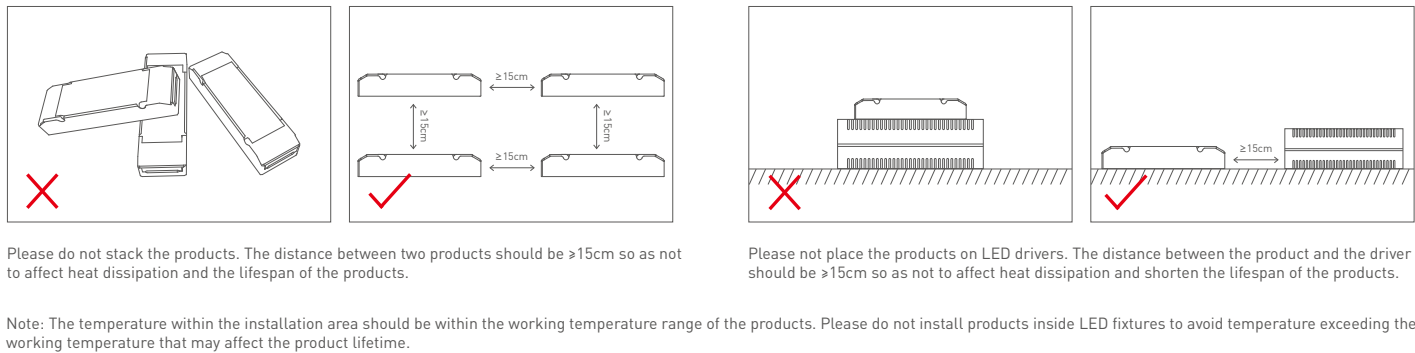
The typical 8 current data sets below are for reference when selecting LED fixture models. More current levels can be set by NFC using mobile APP with 100-450mA adjustable in 1mA step									
SE-6-100-450-G1T	Output Current	100mA	150mA	200mA	250mA	300mA	350mA	400mA	450mA
	Output Voltage	9-42Vdc	9-42Vdc	9-31Vdc	9-25Vdc	9-21Vdc	9-18Vdc	9-15Vdc	9-14Vdc
	Output Power	0.9-4.2W	1.35-6.3W	1.8-6.2W	2.25-6.25W	2.7-6.3W	3.15-6.3W	3.6-6W	4.05-6.3W

The typical 8 current data sets below are for reference when selecting LED fixture models. More current levels can be set by NFC using mobile APP with 350-700mA adjustable in 1mA step									
SE-6-350-700-G1T	Output Current	350mA	400mA	450mA	500mA	550mA	600mA	650mA	700mA
	Output Voltage	2-18Vdc	2-15Vdc	2-14Vdc	2-12Vdc	2-11Vdc	2-10Vdc	2-9Vdc	2-9Vdc
	Output Power	0.7-6.3W	0.8-6W	0.9-6.3W	1-6W	1.1-6.05W	1.2-6W	1.3-5.85W	1.4-6.3W

Protective Housing Application Diagram



Installation Precautions



Use the NFC Lighting APP

Scan the QR code below with your mobile phone and follow the prompts to complete the APP installation (According to performance requirements, you need to use a NFC-capable Android phone, or an iphone 8 and later that are compatible with iOS 13 or higher).



✱ Before you begin setting the parameters of the driver, please make sure the driver is powered off.

Read/Write the LED driver

Use your NFC-capable phone to read LED driver data, then edit the parameters and they can be directly written to the driver.

1. Read the LED driver

On the APP home page, click 【Read/Write LED driver】 , then keep the programmer's sensing area close to the NFC logo of the driver to read the driver parameters.

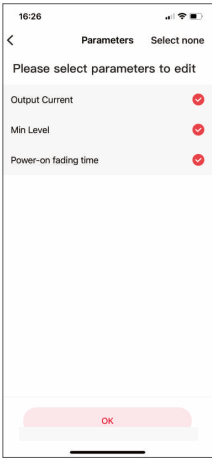
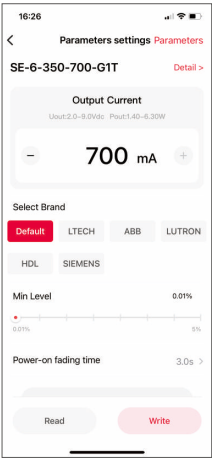
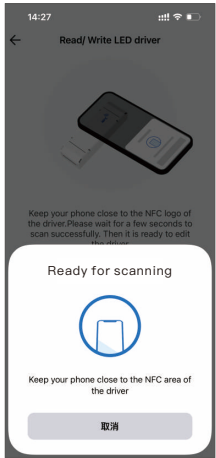


2. Edit the parameters

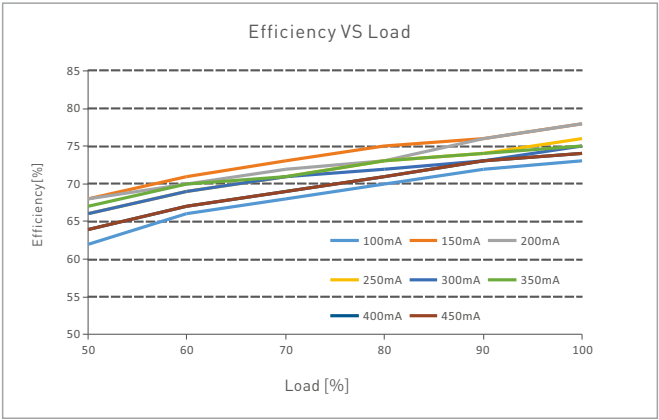
Click 【Parameter settings】 to edit the output current, minimum brightness value, power transition time and more advanced parameters.

3. Write to the driver

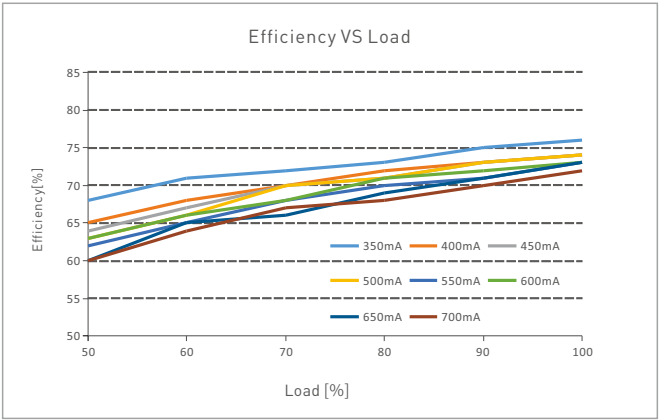
After completing the parameter settings, click 【Write】 in the upper right corner, and keep the programmer's sensing area close to the NFC logo of the driver, so the parameters can be written to the driver.



Relationship Diagrams

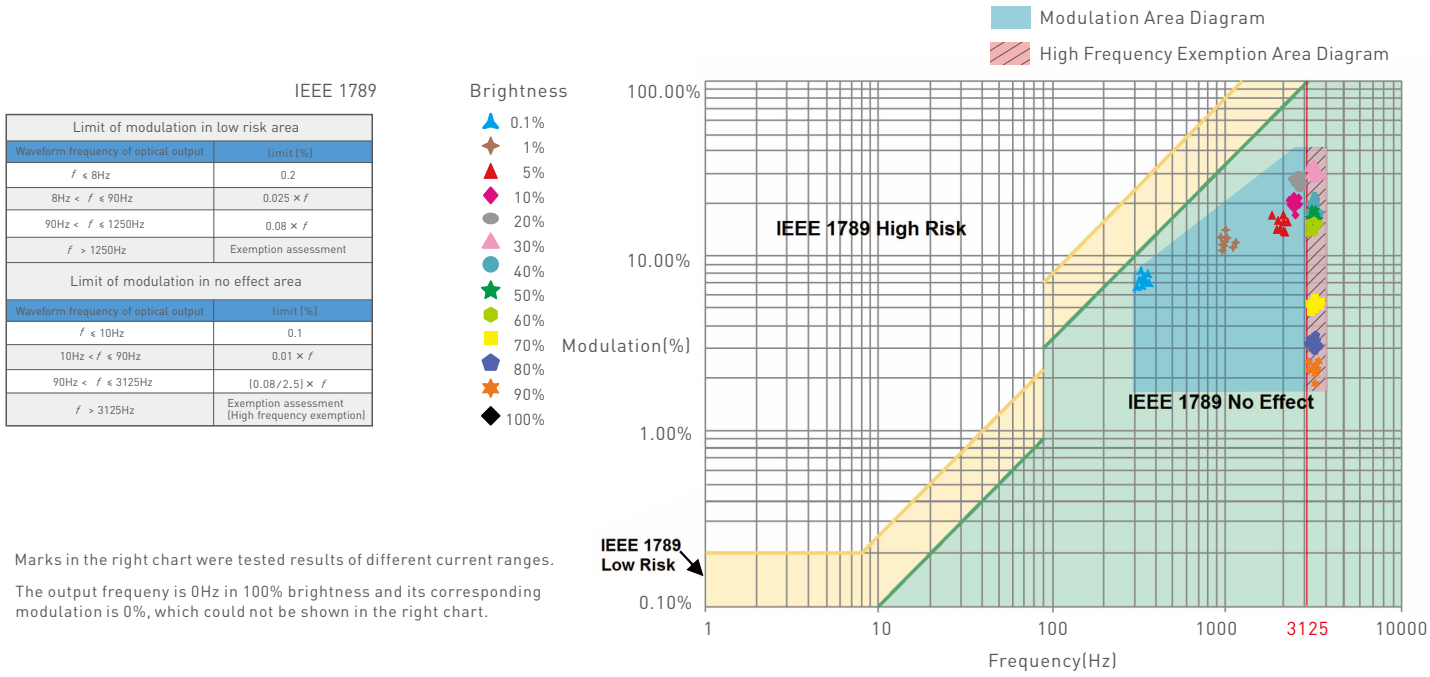


SE-6-100-450-G1T



SE-6-350-700-G1T

Flicker Test Sheet



Packaging Specifications

Model	SE-6-100-450-G1T/SE-6-350-700-G1T
Carton Dimensions	305×255×140mm(L×W×H)
Quantity	20 PCS/Layer; 5 Layers/Carton; 100 PCS/Carton
Weight	0.05 kg/PC; 5.0 kg±5%/Carton

Packaging Image



Inner Packaging Box



Carton Packaging

Transportation and Storage

1. Transportation

Products can be shipped via vehicles, boats and planes.

During transportation, products should be protected from rain and sun. Please avoid severe shock and vibration during the loading and unloading process.

2. Storage

The storage conditions should comply with the Class I Environmental Standards. The products that have been stored for more than six months are recommended to be re-inspected and can be used only after they have been qualified.

Attentions

- This product must be installed and adjusted by a qualified professional.
- This product is non-waterproof (special models excepted). Please avoid the sun and rain. When installed outdoors, please ensure it is mounted in a water proof enclosure.
- Good heat dissipation will extend the life the product. Please install the product in a environment with good ventilation.
- When you install this product, please avoid being near a large area of metal objects or stacking them to prevent signal interference.
- Please keep the product away from a intense magnetic field, a high pressure area or a place where lightning is easy to occur.
- Please check whether the working voltage used complies with the parameter requirements of the product.
- Before you power on the product, please make sure all the wiring is correct in case of incorrect connection that may cause a short circuit and damage the components, or trigger a accident.
- If a fault occurs, please do not attempt to fix the product by yourself. If you have any question, please contact the supplier.

* This manual is subject to changes without further notice. Product functions depend on the goods. Please feel free to contact our official distributors if you have any question.

Warranty Agreement

- Warranty periods from the date of delivery: 5 years.
- Free repair or replacement services for quality problems are provided within warranty periods.

Warranty exclusions below:

- Beyond warranty periods.
- Any artificial damage caused by high voltage, overload, or improper operations.
- Products with severe physical damage.
- Damage caused by natural disasters and force majeure.
- Warranty labels and barcodes have been damaged.
- No any contract signed by LTECH.

1. Repair or replacement provided is the only remedy for customers. LTECH is not liable for any incidental or consequential damage unless it is within the law.
2. LTECH has the right to amend or adjust the terms of this warranty, and release in written form shall prevail.

Update Log

Version	Updated Time	Update Content	Updated by
A0	20240809	Original version	Yang Weiling