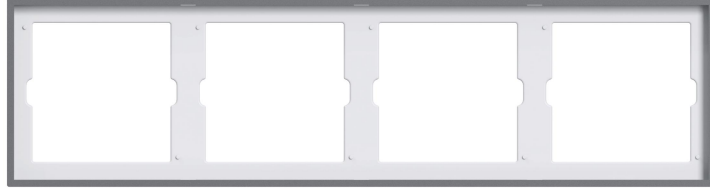


Plastic Panel Mounting Frame

(For Double / Triple / Quad Panels)



Manual

www.ltech-led.com

Product Introduction

Make panels look more stunning, more organized.

Panel mounting frame can be used to solve multiple installation issues, such as installing panels upside down, space inconsistency between panels, not aligning with other panels on the same row.

Combine multiple panels together to meet your different needs.

Freely combine Super+ series panels into a whole part to create your exclusive control system and use it to perform various scenarios.

Multiple colors available to fit different interior design styles.

Grey, gold and white are selectable.

Compatible Panels

Product Name	Product Model
Super Panel	SP-GW-6S, SP-GW-4S
Super Smart Switch	S1, S2, S3, SQ, S1 PRO, S2 PRO, S3 PRO, SQ PRO, S6-B
5-Hole Socket	SK5, SK5T

Note: If you have any questions related to other compatible panel models, please feel free to contact our authorized distributor or salesman.

01

Specifications



Model	SP2
Dimensions	180x93x10mm
Net weight	70g



Model	SP3
Dimensions	266x93x10mm
Net weight	100g

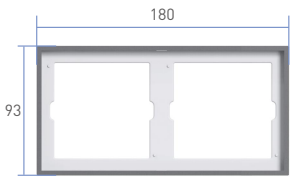


Model	SP4
Dimensions	352x93x10mm
Net weight	136g

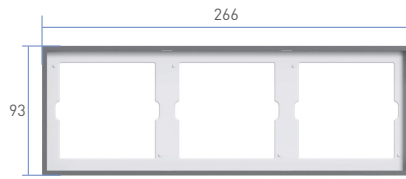
02

Product Size

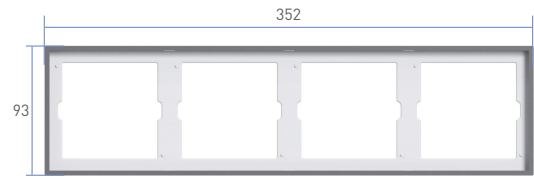
Unit: mm



Double Panel Mounting Frame



Triple Panel Mounting Frame



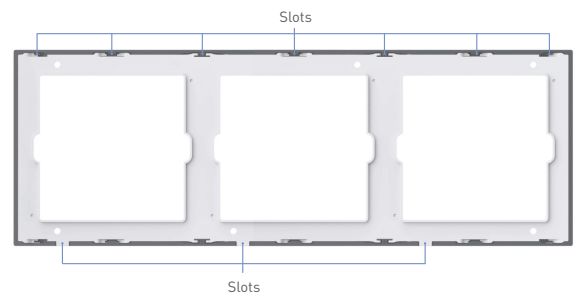
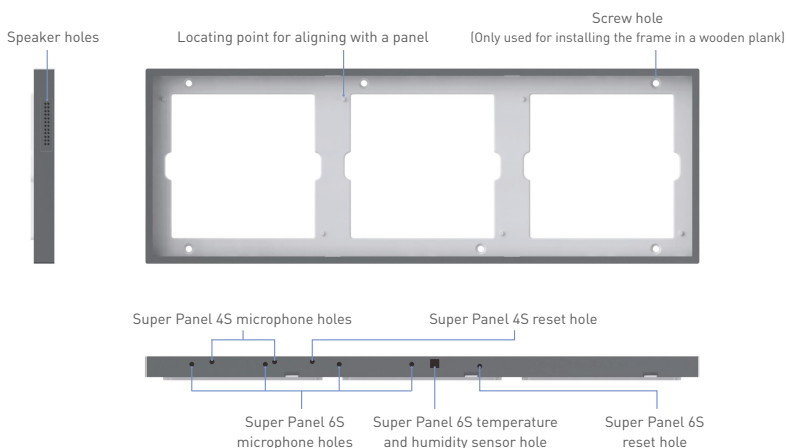
Quad Panel Mounting Frame



Side View

03

Product Diagram



Note: Super Panel 6S (model: SP-GW-6S) or Super Panel 4S (model: SP-GW-4S) can only be installed on the far left. Because when speaker, microphone or temperature and humidity sensor are blocked, some functions will fail to work.

04

Installation Steps

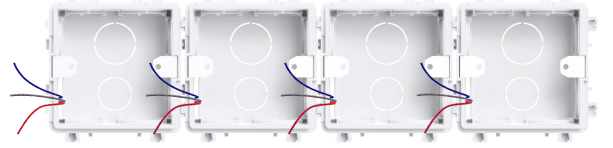
① Choose the right junction box

Please be sure you're using a multi-gang junction box and the inner size of each junction box must be greater or equal to 72x72mm.



② Trim the wires

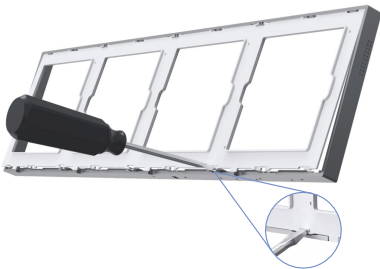
Turn off the power at the circuit breaker first. Please ensure a flat wall surface to install and remove any concrete or corrosion that are inside the wall boxes. Trim each wire in the wall box to about 10cm in length.



05

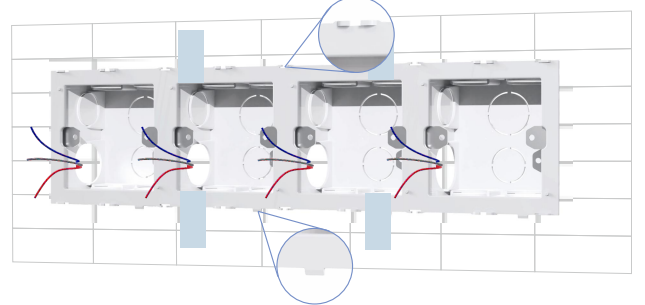
③ Pry the supporting frame off the whole frame

Place the screwdriver head on a slot near the rim to separate the supporting frame from the whole frame.



④ Install the supporting frame

Align the supporting frame with the junction boxes and adjust the position if necessary, then use auxiliary labels to fix the supporting frame to the wall. (Please do not install the supporting frame upside down)

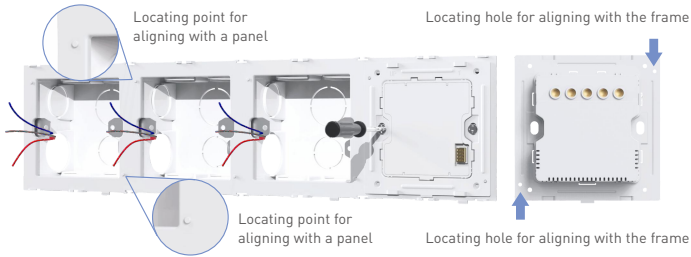


Note: The auxiliary labels are only used for fixing the frame during installation. Once it is done, please remove the labels to avoid glue residue or a tear in the wall caused by label sticking on the wall for too long.

06

⑤ Position the smart switches

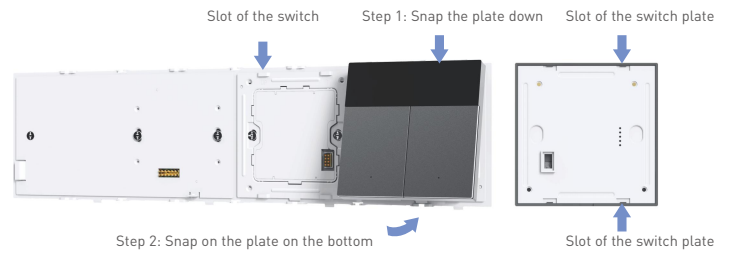
According to the smart switch manuals, detach the switch plate from the switch first and do the wire connections. Then align the switch locating holes with the locating points and tighten the KM4 screws to secure the switches to the boxes.



Note: Super Panel 6S (model: SP-GW-6S) or Super Panel 4S (model: SP-GW-4S) can only be installed on the far left. Because when speaker, microphone or temperature and humidity sensor are blocked, some functions will fail to work.

⑥ Put the switch plate in place

Slant the bottom of the switch plate and snap it to the frame. Finally, turn on the power at circuit breaker and press any smart switch button. If the light can be controlled normally, it means the installation is done correctly.

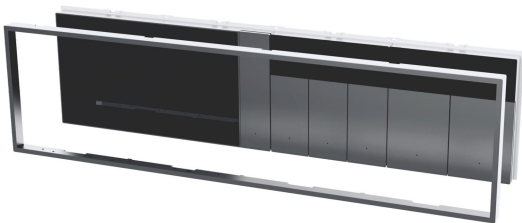


Note: When you snap the plate of Super Panel 6S(model: SP-GW-6S) or Super Panel 4S(model: SP-GW-4S) to the frame, a screw is needed to secure the panel.

07

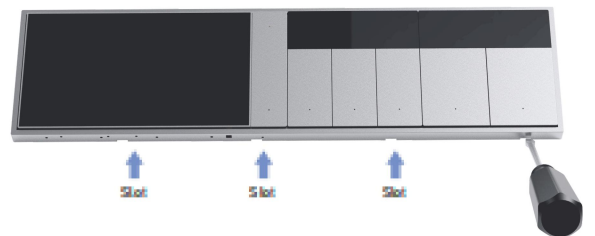
⑦ Snap on the surface frame

Align the surface frame with the slot to snap it on.



Remove the surface frame from the whole frame

Place the screwdriver head on a slot at the bottom of the surface frame to separate the surface frame from the whole frame.



08

Attentions

- This product must be installed and adjusted by a qualified professional.
- This product is non-waterproof. Please avoid the sun and rain. When installed outdoors, please ensure it is mounted in a water proof enclosure.
- Make sure the installation wall is flat and dry.
- When installing, please confirm that the frame's slots and holes are aligned. Please do not install the frame upside down, or do not make the space between panels inconsistent so as to avoid damage to the product.
- If a fault occurs, please do not attempt to fix the product by yourself. If you have any question, please contact the supplier.

* This manual is subject to changes without further notice. Product functions depend on the goods. Please feel free to contact our official distributors if you have any question.

Warranty Agreement

Warranty periods from the date of delivery: 2 years.

Free repair or replacement services for quality problems are provided within warranty periods.

Warranty exclusions below:

- Beyond warranty periods.
- Any artificial damage caused by high voltage, overload, or improper operations.
- Products with severe physical damage.
- Damage caused by natural disasters and force majeure.
- Warranty labels and barcodes have been damaged.
- No any contract signed by LTECH.

1. Repair or replacement provided is the only remedy for customers. LTECH is not liable for any incidental or consequential damage unless it is within the law.

2. LTECH has the right to amend or adjust the terms of this warranty, and release in written form shall prevail.

塑料面板 (联排边框)

(二位 / 三位 / 四位)



使用说明书
www.ltech.cn

产品介绍

颜值担当 化凌乱为整齐

一体化安装框架, 解决多个Super+系列面板安装时, 上下错位、左右间隙不一、对齐麻烦等问题

自由搭配 满足多种需求

Super+系列面板随心组合, 定制专属于您的控制系统, 多种场景应用自如

多色可选 百搭各种风格

莫奈灰、梵高金、雷曼白, 3种颜色任您选择

适配面板型号

产品名称	产品型号
超级面板	SP-GW-6S、SP-GW-4S
超级智能开关	S1、S2、S3、SQ、S1 PRO、S2 PRO、S3 PRO、SQ PRO、S6-B
五孔插座	SK5、SK5T

注: 其他型号, 如有疑问请咨询我司授权的经销商或销售。

01

基本参数



产品型号	SP2
产品尺寸	180x93x10mm
产品重量	70g



产品型号	SP3
产品尺寸	266x93x10mm
产品重量	100g

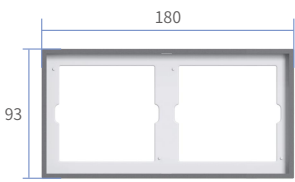


产品型号	SP4
产品尺寸	352x93x10mm
产品重量	136g

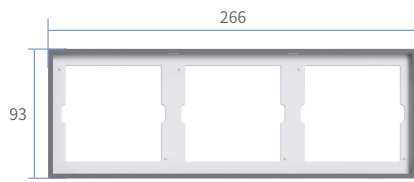
02

产品尺寸

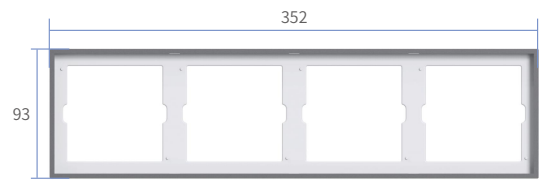
单位: mm



二位正视图



三位正视图



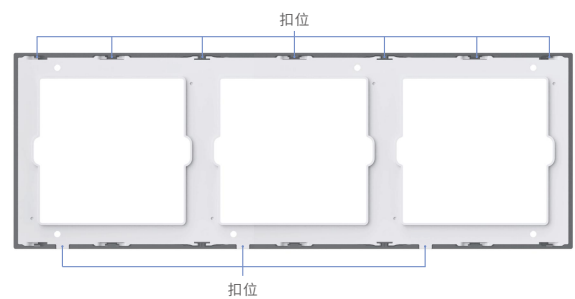
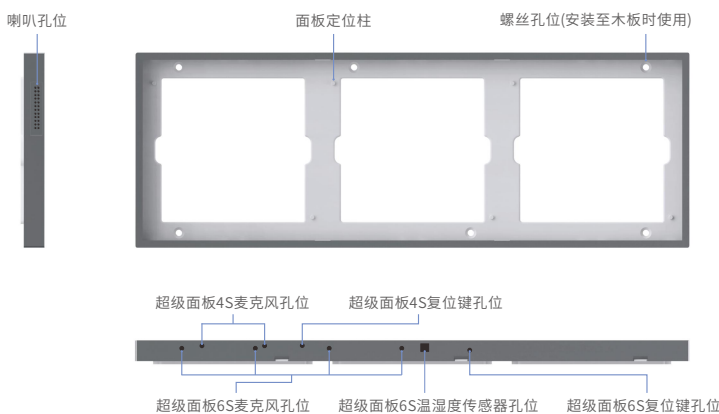
四位正视图



侧视图

03

产品部件图



注意: 超级面板6S(型号: SP-GW-6S)与超级面板4S(型号: SP-GW-4S)必须安装在最左侧, 否则会由于扬声器、麦克风、温湿度传感器被遮挡导致相应功能失效。

04

安装步骤

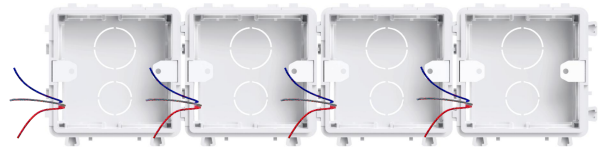
① 确定暗装底盒

必须使用联排暗装底盒，且底盒内尺寸必须 $\geq 72 \times 72$ mm。



② 剥电源线

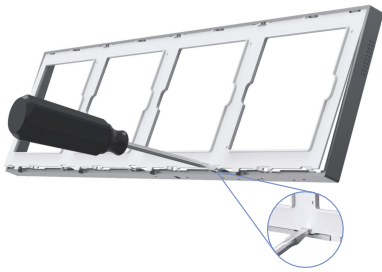
关闭电源总闸，确保墙面平整光滑并确认暗盒内壁无水泥等附着物，将暗盒内的电源线长度修减至10cm左右。



05

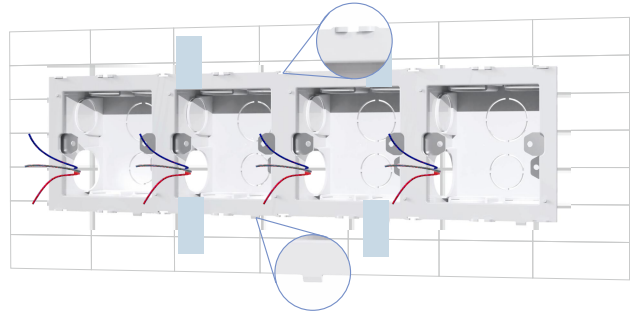
③ 撬开联排支架

用螺丝批在中间扣位撬开，将支架与外框分开。



④ 安装联排支架

将支架对准暗盒，调整好位置后用辅助贴将支架固定至墙面(注意支架上下安装方向)。

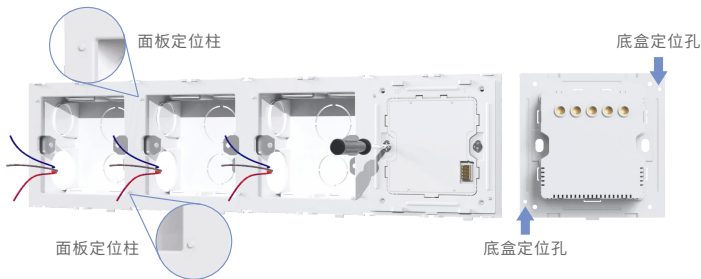


注意：辅助贴仅用于安装辅助固定使用，固定好任意底盒后即可将辅助贴撕掉，避免长时间粘贴导致留胶或墙体撕裂。

06

⑤ 智能开关底盒定位

按照智能开关使用说明书撬开底盒并正确接线后，将底盒定位孔对准面板定位柱，并使用KM4螺丝将底盒固定到暗盒中，使底盒贴合支架。



注意：超级面板6S(型号：SP-GW-6S)与超级面板4S(型号：SP-GW-4S)必须安装在最左侧，否则会由于扬声器、麦克风、温湿度传感器被遮挡导致相应功能失效。

⑥ 扣合面板

倾斜面板并扣合在底盒上，开启电源总闸，按下智能开关按键，可正常控制灯光即安装正确。



注意：超级面板6S(型号：SP-GW-6S)与超级面板4S(型号：SP-GW-4S)底部扣合时需使用螺丝固定。

07

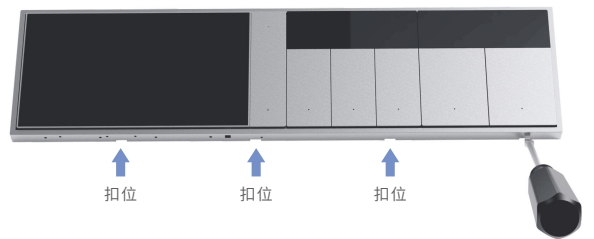
⑦ 扣合联排外框

将联排外框对准扣位扣合。



联排外框拆卸

在联排外框底部扣位处用螺丝批撬开即可。



08

注意事项

- 本产品请由具有专业资格的人员进行调试安装；
- 本产品(专有型号除外)不能防水，需避免日晒雨淋。如安装在户外，请使用防水箱；
- 确保安装墙面平整，干燥的条件下进行；
- 安装时需确认产品扣位已对齐、上下不错位、左右间隙一致，防止安装不当导致产品损坏。
- 如果发生故障，请勿私自维修；如有疑问，请联系供应商。

* 本说明书的内容如有变更，恕不另行通知。若内容与您使用的功能有所不同，则以实物为准。
如有疑问，欢迎向我司授权的经销商咨询。

保修条例

- 自出厂之日起保修服务期为2年。
- 在保修服务期内出现产品质量问题雷特将给予免费修理或更换服务。

非保修条例：

属下列情况不在免费保修或更换服务范围之内：

- 已经超出保修服务期；
- 过高电压、超负载、操作不当等人为造成的损坏；
- 产品外形严重损坏或变形；
- 自然灾害以及人力不可抗拒原因造成的损坏；
- 产品保修标签和产品唯一条形码损坏；
- 无雷特签订的合同或发票凭证。

1. 修理或更换是雷特对客户唯一补救措施。雷特不承担任何附带引起的损害赔偿，除非在适用法律范围之内。
2. 雷特享有修正或调整本保修条款的权利，并以书面形式发布为准。